



BOSS HYPERFLUSH 36

Power flushing pump with antacid vertical axis. Designed for the washing of domestic systems equipped with flow inverter, complete hydraulic systems of valves and faucets. Pump suitable to work up to 15, max 20 radiators.

COD. 301301014

CHEMICAL AND PHYSICAL FEATURES

WEIGHT	17 kg
ELECTRICAL PROTECTION	IP 55
IN/OUT CONNECTIONS	3/4" F
MAX. FLOW RATE	50 l/min
OPERATING PRESSURE	1,6 bar
TANK CAPACITY	36 litres
MAX. TEMPERATURE	70°C
MATERIAL	PP
MOTOR	230vac /50 Hz/0,373 kW
DIMENSIONS	H: 630 mm L: 350 mm P: 350 mm

PACKAGING FEATURES

NUMBER OF PIECES PER BOX	1 pc
NUMBER OF PIECES PER EPAL PALLET	18 pcs
BOX DIMENSIONS	H: 67 L: 37 P: 37,5 cm
EPAL PALLET DIMENSIONS	80x120x214 cm
PRODUCT WEIGHT	16 kg
BOX WEIGHT	17,5 kg
EPAL WEIGHT	335 kg
CUSTOMS CODE *	8413.81.00
BARCODE EAN 13	8054633849927

*Data updated in May 2016

ADVANTAGES

- Unscrewign motor flange
- Flow inverter
- No damages in case of dry working
- Operating up to 70°C

BENEFITS

- Optimal heat exchange restoring
- Energy consumption reduction
- Reduction of energy consumption visible on your bill
- Reduction of processing time thanks to the complete hydraulic control system

MAIN FEATURES

Boss Hyperflush 36 pump has been designed to offer to the final user a pump with small dimensions, light, manageable and safe.

Equipped with practical wheels for an easy handling.

The supporting structure has been designed in a unique polypropylene , reinforced and shock resistant tank (in white color, for a better vision of the liquid contained inside) and a motor with vertical axis.

This pump is equipped with reinforced pipes, flexible connections for an easy connection to the system. Equipped with flow inverter, through a manual lever, that helps to improve its efficiency, guaranteeing to the descaling/restoring liquid to alternatively acts in both sides of the circuit. For a good operation, it is suggested to use the restoring product BP 800, BP DECAL-SANIT, and potentially BP 400.

After its use, or at least at the end of the day, accurately clean the pump with recirculating water for at least 10 minutes to eliminate muds and the descaling solution. Boss Hyperflush 36 pump has been designed with anti-corrosion material and so, can resist to the acid products action (suitable for the descaling of boilers, kettles, heat exchangers, wall-mounted boilers and hearth-mounted boilers, cooling systems, plastic molding machines, evaporative cooling tower).

APPLICATION AND USE

Pump for the cleaning, refill, restoring and drain of heating and cooling systems both of conventional and low temperature, made of any plastic and metal material. Descaling with acid products of heat exchangers and pipes of sanitary systems.

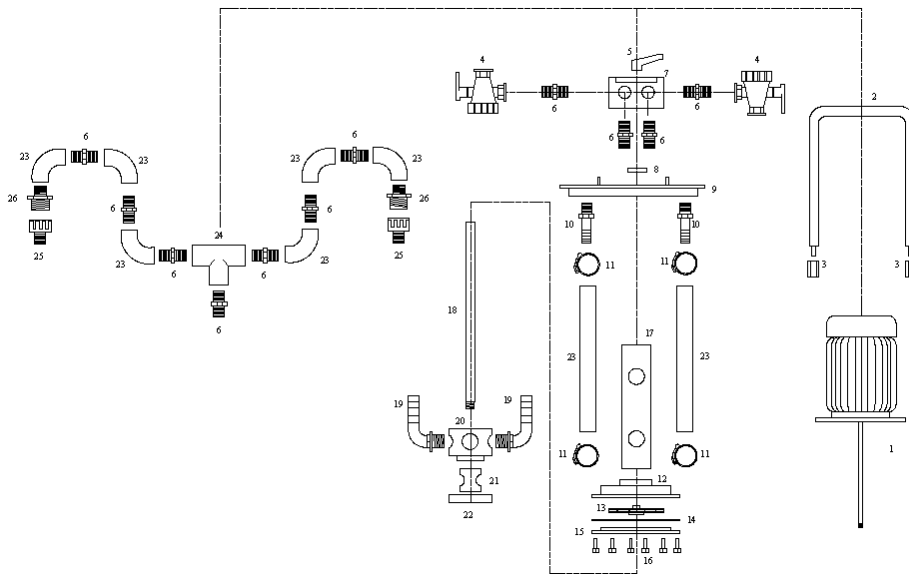
WHAT DO I NEED TO INSTALL IT

- Flexible pipes for an easier connection
- Nipples
- Connections
- Typical plumber 'tools for connections of different type.

CORRECT INSTALLATION

1. Connect the pipes of the device (discharge, return, charge and drain)
2. Control the connections endurance
3. Connect the pump to the system that has to be treated
4. Fill the tank with clean water and add the restoring/descaling chemical product

EXPLODED VIEW AND SPARE PARTS



- | | |
|------------------------------|-----------------------------|
| 1 - MOTOR | 14 - IMPELLER GASKET |
| 2 - HANDLE | 15 - IMPELLER LID |
| 3 - PVC HANDLE NUTS | 16 - PA SCREWS |
| 4 - 3-WAY VALVE | 17 - PUMP BODY |
| 5 - SWITCH LEVER | 18 - SWITCH STEM |
| 6 - 3/4" NIPPLE | 19 - 3/4" CURVE HOSE HOLDER |
| 7 - DISTRIBUTOR BLOCK | 20 - SWITCH CYLINDER |
| 8 - CABLE SEAL | 21 - SWITCH PISTON |
| 9 - FLANGE | 22 - SWITCH LID |
| 10 - STRAIGHT HOSE CONNECTOR | 23 - 3/4" BEND |
| 11 - HERBIE HOSE CLAMP | 24 - "T" 3/4" |
| 12 - PUMP CASE | 25 - 3/4" - 1" COUPLING |
| 13 - IMPELLER 110 MM | 26 - REDUCTION MM 3/4"- 1" |

PACKAGING CONTENT

- Pump
- Bag with wheels
- Connection pipes equipped with connections and hose clamps:
- User's guide

MAINTENANCE

Respect all regulations for the use and disposal of the finished solution. It is suggested, in case of dripping, the immediate cleaning with water rinse. Be careful not to wet the motor of the pump. Periodically control the connections holding. Do not leave the pump unattended while it is in operation. At the end of descaling operations, proceed and abundantly rinse with clean water. Do not leave any acid product inside the tank.

OPTIONAL

1. Pump cleaning adaptor
COD. 301310001
2. Kit tubi HF
COD. 301310004



SIMILAR PRODUCTS

- | | |
|---|---|
| <ol style="list-style-type: none"> 1. Transformer
PFH 55
COD. 301301012 2. Transformer
Combi HF 75
COD. 301301005 3. Transformer
Combi HF 110
COD. 301301006 | <ol style="list-style-type: none"> 4. Transformer
PHF 85
COD. 301301013 5. Pulisci Prova
Impianti Media
COD. 301301010 6. Pulisci Grandi
Impianti
COD. 301301011 |
|---|---|



TO BE USED WITH

1. Conditioning products for heating systems
2. Geothermal products
3. Cooling products
4. Solar thermal products
5. Descaling products

OFFER DESCRIPTION

Descaling power flushing pump, with antacid vertical axis. Connection from ¾", tank 36 litres. Equipped with flow inverter, hydraulic control system with valves, tap and overflow. To be used to restore heating systems and to clean wall-mounted boilers, hearth-mounted boilers, big boilers, heat exchangers, boilers, small and medium systems. To be used up to 70°C. Flow rate 50 l/min, prevalence 1,6 bar. Electricity supply 230 VAC.

COMPLIANCE

This products mod. BOSS HYPERFLUSH 36 has been designed and constructed in accordance with the following European directives (including all applicable amendments):

Directive 2006/42/EC: Machine

Directive 2006/95/EC: Low Voltage

Directive 2004/108/EC: Electromagnetic Compatibility

Directive 2011/65/EC: RoHS 2

In addition, declares, that the electrical material used to made the product is in compliance with Regulation CEI-EN 60034: Electrical rotating machines. Part 1: Nominal and operative features.

ORIGIN OF THE PRODUCT

 Made in Italy

DS.353.00
Date of issue: 23/10/2017
Date of revision:

Boiler Performance by Manta Ecologica S.r.l.

Viale Archimede, 45 - 37059 - Zevio (VR)

www.boilerperformance.com

