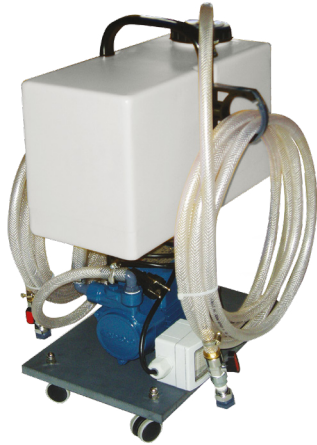


POMPA FLUX SOLAR

Compact pump with high hydraulic head for the filling of solar heating systems

COD. 301003001



CHEMICAL AND PHYSICAL FEATURES

TANK	20 l
MAX FLOW RATE	18 l/min
IN/OUT CONNECTIONS	1/2"
PRESSURE	8 bar
MOTOR	230 V/50 Hz/0,165 kW
DEGREE OF PROTECTION	IP 44
WEIGHT	15 kg
POWER	0,5 kW
TEMPERATURE	60° C
DIMENSIONS	H: 625 mm L: 470 mm P: 290 mm

PACKAGING FEATURES

NUMBER OF PIECES PER BOX	1 pc
NUMBER OF PIECES PER EPAL PALLET	12 pcs
BOX DIMENSIONS	H: 70,5 L:43 P: 47 cm
EPAL PALLET DIMENSIONS	80x120x225 cm
PRODUCT WEIGHT	14 kg
BOX WEIGHT	15 kg
EPAL WEIGHT	200 kg
CUSTOMS CODE*	8413.82.00
BARCODE EAN 13	8054633849279

* Data updated in May 2016

ADVANTAGES

- High hydraulic head
- Small dimensions
- Deaerator function
- Single-phase

BENEFITS

- Restoring of the correct functioning of solar panels
- Elimination of air bag during the system replenishment
- Complete replenishment of systems
- Solar panels replenishment also from the ground floor

MAIN FEATURES

Manta Flux Solar pump has been designed to offer the minimum amount of space, contained weight, easy handling and safety together with high performances of flow rate and prevalence. The structure is made of a unique tank in reinforced shock absorbent polypropylene, with a peripheral impeller pump, braided pipes, equipped with closing valves and flexible connections to simplify the connection to the system.

After its use, or at least at the end of the day, accurately clean the pump with circulating water for at least 10 minutes to remove all debris.

To improve the pump operation, it could be add a small quantity of BP 100 in the recirculation. To avoid any corrosion and impeller blockages, eliminate more water as possible from the pump, from pipes and tank.

Manta Flux Solar pump, even if is designed with materials resistant to corrosion, IT IS NOT RESISTANT TO ACIDS ACTION.

APPLICATION AND USE

The pump is suitable for conventional heating and cooling systems replenishment, and also for underfloor and above all solar systems.

WHAT DO I NEED TO INSTALL IT

The pump is suitable for conventional heating and cooling systems replenishment, and also for underfloor and above all solar systems.

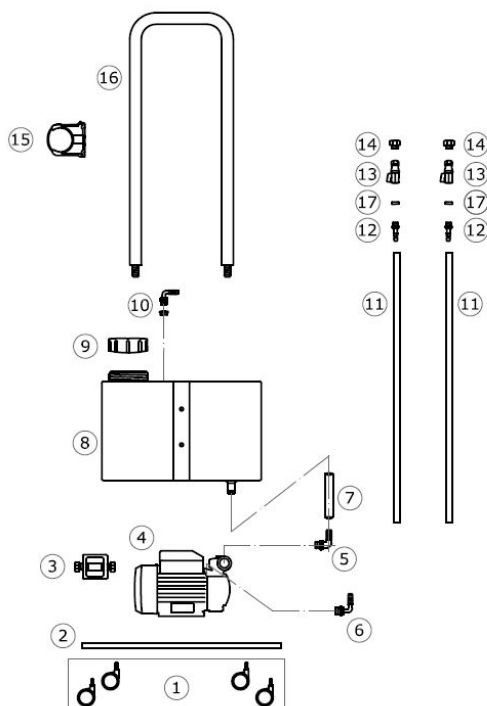
1. Flexible pipes for an easier connection
2. Nipples
3. Typical plumber tools for connections of different types.

CORRECT INSTALLATION

Before inserting the plug inside the mains supply, make sure that the power switch on the pump is on the off position (O).

1. Make sure that the outlet pipes and related connections with hose clamps are tightly fastened and watertight integrity.
2. Pour the eventual product inside the tank, refill with circulating water and turn on the motor till at the complete replenishment.
3. At the end of the fluid introduction, close the taps and disconnect the pump, being careful to not pour chemical products on surfaces and objects.
4. Follow carefully the maintenance instructions contained inside the present manual for a better duration of the pump during the time.

EXPLODED VIEW AND SPARE PARTS



- 1 - WHEELS
- 2 - SUPPORT PLATE
- 3 - SWITCH
- 4 - MOTOR
- 5 - CURVED HOSE CONNECTOR
- 6 - CURVED HOSE CONNECTOR
- 7 - SUPPLY PIPE
- 8 - TANK
- 9 - TAP
- 10 - REPLENISHMENT HOSE CONNECTOR
- 11 - BRAIDED PIPE
- 12 - STRAIGHT PIPE
- 13 - HEAD TUBE NIPPLE
- 14 - MALE TAP
- 15 - TUBE HOLDER
- 16 - HANDLE
- 17 - FLAT GASKETS

PACKAGING CONTENT

1. Flux Solar pump
2. User's guide

MAINTENANCE

After its use, or at least at the end of the day, accurately clean the pump with circulating water for at least 10 minutes to remove all debris. To improve the pump operation, it could be add a small quantity of BP 100 in the recirculation. To avoid any corrosion and impeller blockages, eliminate more water as possible from the pump, from pipes and tank. Periodically, unscrew the drain nut placed on the pump case and spray an anticorrosive product.

SIMILAR PRODUCTS

1. Pompa Pulisci Impianti
COD. 301301009



1.

TO BE USED WITH

1. Solar thermal chemicals line
2. Geothermal
3. Conditioning products for heating and cooling systems

OFFER DESCRIPTION

Manta Flux Solar pump has been designed to offer the minimum amount of space, contained weight, easy handling and safety together with high performances of flow rate and prevalence. The structure is made of a unique tank in reinforced shock absorbent polypropylene, with a peripheral impeller pump, braided pipes, equipped with closing valves and flexible connections to simplify the connection to the system. Manta Flux Solar pump, even if is designed with materials resistant to corrosion, IT IS NOT RESISTANT TO ACIDS ACTION.

COMPLIANCE

This product mod. FLUX SOLAR PUMP has been designed and constructed in accordance with the following European directives (including all applicable amendments):

Directive 2006/42/EC: Machine

Directive 2006/95/EC: Low Voltage

Directive 2004/108/EC: Electromagnetic Compatibility

Directive 2011/65/EC: RoHS 2

ORIGIN OF THE PRODUCT

 Made in Italy

TDS. 354.00

Date of issue: 11/05/2016

Date of revision:

Boiler Performance by Manta Ecologica S.r.l.

Viale Archimede, 45 - 37059 - Zevio (VR)

www.boilerperformance.com

