



BOSS 200 FI

Descaling pump suitable for radiators, heat exchangers, press moulding machines, big boilers, chiller and big installations.

COD. 300601010

TECHNICAL FEATURES

TANK	200 l
MAX FLOW RATE	52 l/min
CONNECTIONS	3/4"
MOTOR	230 V/50 Hz/0,373 kW
PRESSURE	1,6 bar
DEGREE OF PROTECTION	IP 55
WEIGHT	22 kg
MAX TEMPERATURE	70° C
DIMENSIONS	H: 1220 mm L: 620 mm P: 620 mm

PACKAGING FEATURES

NUMBER OF PIECES PER BOX	1 pc
NUMBER OF PIECES PER EPAL PALLET	2 pcs
BOX DIMENSIONS	H: 115 L: 58 P: 50 cm
EPAL PALLET DIMENSIONS	80x120x144 cm
PRODUCT WEIGHT	17 kg
BOX WEIGHT	19 kg
EPAL WEIGHT	58 kg
CUSTOMS CODE	8413.82.00
BARCODE EAN 13	8054633849743

*Data updated in May 2016

ADVANTAGES

- No damages in case of dry working
- The biggest pump of the sector
- Operates up to 70°C
- Trolley available among the accessories

BENEFITS

- Restoring of the optimal heat exchange
- Reduction of energy consumption visible on your bill
- Extension of life system
- Prevention of hot water total block

MAIN FEATURES

Boss 200 FI has been designed to remove limestone deposits and corrosion debris from heating and cooling circuits. The plastic tank contains chemical substances safely during the descaling operation, guaranteeing to observe the colour change of the acid after the nut removal thanks to its big diameter. Equipped with Flow Inverter valve (FI), through a manual level, that guarantees to the descaling liquid to alternatively act at both side of the circuit. BOSS 200 FI is able to resist to the action of all common descaling acid products. It has been designed to being used on site, with low weight and good stability. The pump can be used with alkaline cleansing solutions and chlorine based solutions, used for sanitization. The use of descaling products with inhibitors, created by Manta Ecologica S.r.l. assure a fast intervention and the maximum safety for heating systems and workers. For the correct functioning of the pump use exclusively chemical products of BP

descaling line. It is suggested for a long duration of the device to not leave any acid products inside the tank, once the cleaning process is over, and to let circulate for few minutes the neutralizing solution Neutral Liquid or Neutral Powder, in order to eliminate acid debris present inside the system.

APPLICATION AND USE

Descaling pump for radiators, heat exchangers, plastic press moulding machines, big boilers and chiller. The pump is suitable for both civil and industrial uses, to remove limestone scales from coils of kettles and boilers in general. Suitable for being used with restoring products for heating systems cleaning.

WHAT DO I NEED TO INSTALL IT

- Flexible pipes for an easier connection
- Nipples
- Connections
- Typical plumber 'tool for connections of different type.

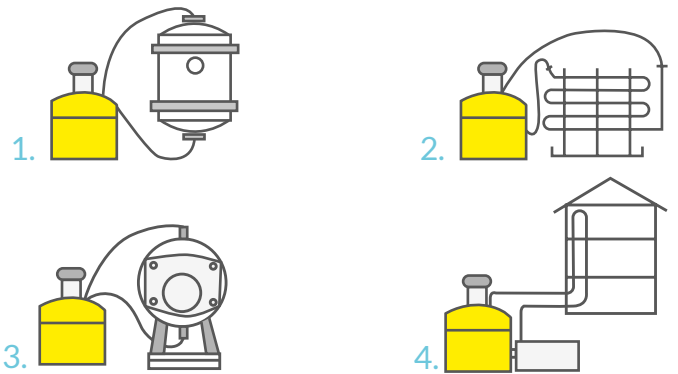
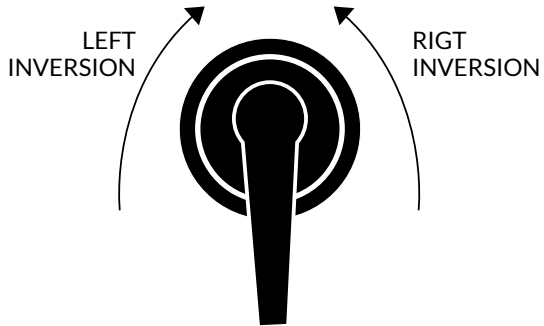
CORRECT INSTALLATION

1. Control, as first thing (if it is possible) as first thing (if it is possible) control if inside the device that has to be descaled, there is enough space to guarantee the passage for the acid solution, the operation is not possible.
2. Disconnect the outlet and inlet of the device to descale, if it is possible, drain it from the internal water and then connect it to the pump, through the use of equipped pipes.
3. Remove the tank cap and add cold water up to half tank (please notice that operational temperature during descaling must never exceed 60 °C).
4. Turn the pump on with the switch and start adding slowly the descaling chemical, until required concentration is obtained. This operation guarantees the correct acid product blending.

Please carefully follow use and safety information reported on the label of product. Anyway, maximum operational time (continuously) of the motor, should not exceed 2 hours. Please after 2 hours, let the system rest for at least half an hour.

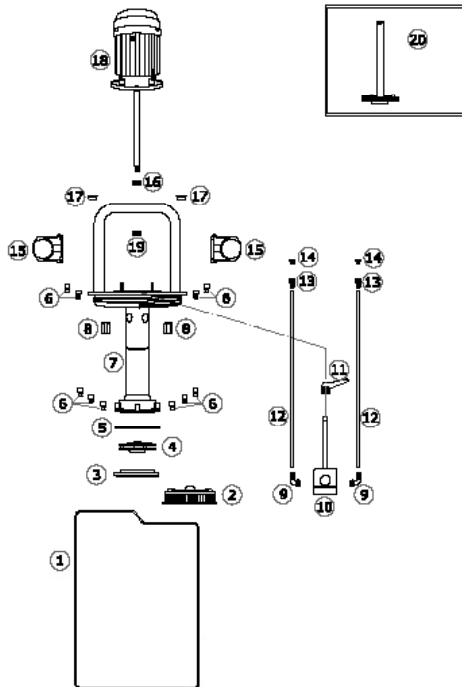
ATTENTION: on all version equipped with Flow Inverter (FI) the acid solution flow can be inverted acting on the external control (directional valve) to obtain a better result.

In case of excessive foam production, dilute the acid solution and switch off for a short time the pump. At the end of the descaling operation, replace the acid solution inside the pump, with clean water and rinse the descaled element.



1. Suitable for the descaling of big heat exchangers
2. Suitable for the descaling and cooling towers
3. Suitable for the descaling of big boilers
4. Suitable for the descaling of systems for the production of hot sanitary water

ESPLOSO E LISTA RICAMBI



- 1- TANK
- 2- NUT + VENT
- 3- IMPELLER COVER
- 4- IMPELLER
- 5- O-RING 117,07x3,53 mm
- 6- PLASTIC SCREW M6 x 20 mm
- 7- PUMP BODY
- 8- PLASTIC NUTS
- 9- CURVE HOSE HOLDER 8131 ½"x 20 mm
- 10- FLOW INVERTER
- 11- KIT DIRECTIOVAL VALVE LEVER
- 12- TREADED HOSE 19x26
- 13- COMPLETED HOSE CONNECTOR 8120 ¾"x19 mm
- 14- MALE NUT 8200 ¾"
- 15- HOSE HOLDER D. 75 mm
- 16- FAIRLEAD FG 028
- 17- FAIRLEAD FG 216
- 18- MOTOR
- 19- ANTI OIL GASKET

PACKAGING CONTENT

- 1 connections bag
- 1 User's guide
- Connection pipes: 2 threaded pipes from 2,5 m each
- Pump

MAINTENANCE

At the end of the descaling operation:

1. Do not leave pump unattended during the operations.
2. Control the pH is included between 6,5 and 9,5. For the liquid neutralization, both the ones present inside the pump, and also the ones present inside the descaled elements, we recommend to use neutralizing products (ex. Neutral Liquid or Neutral Powder).
3. Switch off the pump and disconnect as first thing the powder cord.
4. Wait till when the solution circulating inside the descaled device returns inside the tank.

DO NOT LEAVE ANY ACIDIC SOLUTION INSIDE THE TANK: fumes may seriously damage pump components. .

OPTIONAL

1. Terminal bags
COD. 300610002
2. Connections
COD. 300610003
3. Trolley 100
COD. 300610005
4. HE Descale adaptor
COD. 300610004



2.



4.



SIMILAR PRODUCTS

- | | |
|--|--|
| 1. Boss Pulce FI
COD. 300601001 | 5. Boss 36 - 36 FI
COD. 300601008 - 300601007 |
| 2. Boss 5 FI
COD. 300601002 | 6. Boss 200 FI
COD. 300601010 |
| 3. Boss 18 - 18 FI
COD. 300601004 - 300601003 | |
| 4. Boss 22 - 22 FI
COD. 300601006 - 300601005 | |



1.



2.



3.



4.



5.



6.

TO BE USED WITH

- | | |
|--|---|
| <p>1. DETEX FE
5 kg - COD. 300501001
10 kg - COD. 300501002
20 kg - COD. 300501003</p> <p>2. DETEX PLUS
1 kg - COD. 300501014
5 kg - COD. 300501004
10 kg - COD. 300501005
20 kg - COD. 300501006</p> <p>3. DETEX Plurimetal
10 kg - COD. 300501011
20 kg - COD. 300501012</p> <p>4. DETEX POWDER
MULTI
1 kg - COD. 300501007
10 kg - COD. 300501008</p> | <p>5. DETEX POWDER
ZN
1 kg - COD. 300501009
10 kg - COD. 300501010</p> <p>6. NEUTRAL LIQUID
10 kg - COD. 300502001</p> <p>7. NEUTRAL POWDER
1 kg - COD. 300502002
10 kg - COD. 300502003</p> |
|--|---|



OFFER DESCRIPTION

Suitable for the cleaning with acid products of radiators, heat exchangers, plastic press moulding machines, big boilers and chiller. Equipped with trolley for a higher handling and facility of movement.

CONFORMITÀ

This products mod. BOSS 200 FI has been designed and constructed in accordance with the following European directives (including all applicable amendments):

Directive 2006/42/EC: Machine

Directive 2006/95/EC: Low Voltage

Directive 2004/108/EC: Electromagnetic Compatibility

Directive 2011/65/EC: RoHS 2

In addition, declares, that the electrical material used to made the product is in compliance with Regulation CEI-EN 60034: Electrical rotating machines. Part 1: Nominal and operative features.

ORIGIN OF THE PRODUCT

 Made in Italy

DS.351.00
Date of issue: 14/10/2016
Date of revision:

Boiler Performance by Manta Ecologica S.r.l.

Viale Archimede, 45 - 37059 - Zevio (VR)

www.boilerperformance.com

